

ST 060 300 2371

- rotary diverter
- rosette Ø 85 mm



Individual components of this set

You need the following components for this set



1x 36 104 371-00



1x 11 170 370-00



## MADISON Concealed two- and three-way diverter - Chrome

---

MADISON

ST 060 300 2371

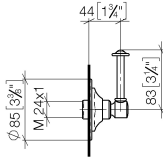
ST 060 300 2371



- rotary diverter
- rosette Ø 85 mm

ST 060 300 2371

mm [inches]



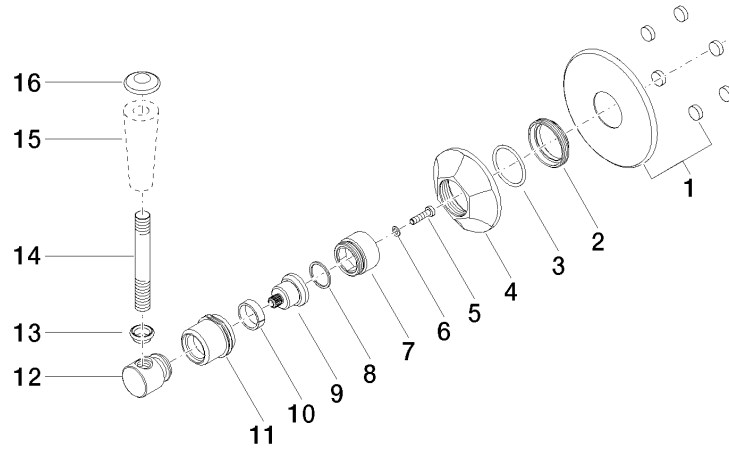
### Codes & Standards

ADA

### Certificates

LGA\_28456.

ST 060 300 2371



**Spare parts list**




No.	Item Number	Name	Quantity used	Delivery time
1	90 27 97 007 00-00	cover	1	10
2	09 23 10 125-00	nut	1	10
3	90 14 10 063 00 90	seal	1	2
4	09 27 37 101-00	rosette	1	10
5	09 30 30 069 90	screw	1	2
6	09 30 11 194 90	disc	1	2
7	09 18 30 007-00	sleeve	1	10
8	90 28 10 030 00 90	ring	1	2
9	09 12 12 064-00	base	1	10
10	90 14 15 021 00 90	ring	1	2
11	09 21 02 160-00	cover	1	10
12	09 20 37 101-00	handle	1	10
13	09 20 37 001-00	handle	1	10
14	09 28 22 013 90	pipe	1	2
15	11 170 370-00	MADISON Lever insert - Chrome	1	10
16	09 30 30 062-00	screw	1	10

ST 060 300 2371

- for basin fittings

NOTE: Mixers are supplied without lever inserts.  
Please order the lever inserts separately!



	Chrome	11 170 370-00
	Brushed Platinum	11 170 370-06
	Platinum	11 170 370-08
	Durabress (23kt Gold)	11 170 370-09
	white	11 170 370-12
	black	11 170 370-13
	Brushed Durabress (23kt Gold)	11 170 370-28
	Brushed Dark Platinum	11 170 370-99



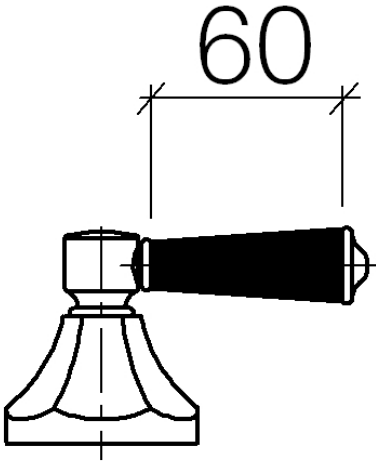
## MADISON Concealed two- and three-way diverter - Chrome

---

MADISON

ST 060 300 2371

ST 060 300 2371







# MADISON Concealed two- and three-way diverter - Chrome

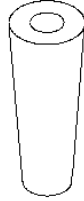
---

MADISON

ST 060 300 2371

ST 060 300 2371

Parts for other  
finishes can be found  
here: Brushed  
Platinum





# MADISON Concealed two- and three-way diverter - Chrome

---

MADISON

ST 060 300 2371